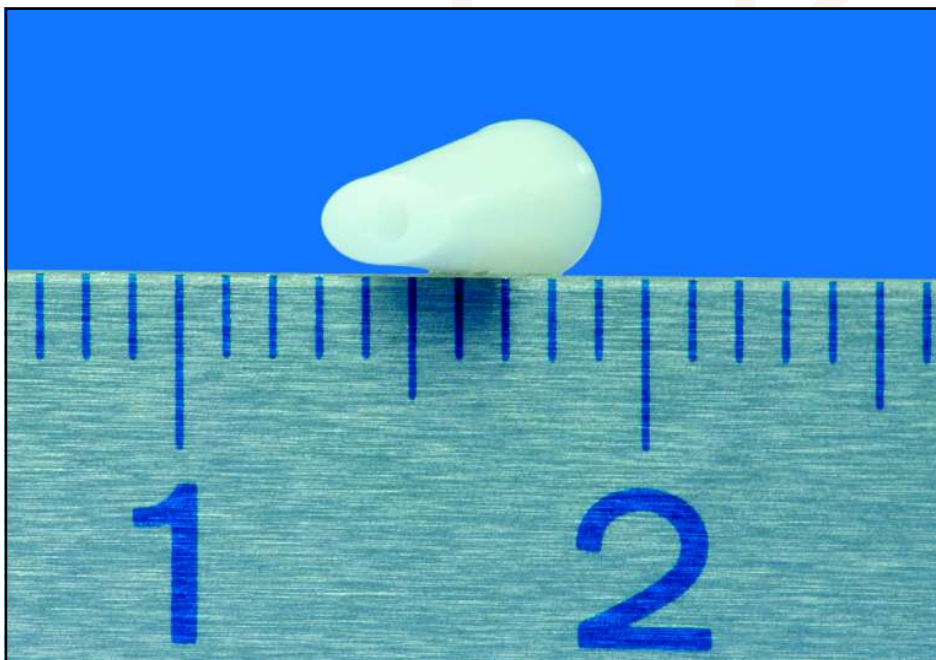


CERAMIC AND METAL INJECTION MOLDING CASE APPLICATION



Technical Data					
Part	Application	Material	Weight [g]	Tolerance [mm]	Special Characteristic
Sleeve	Dental Implant	Al ₂ O ₃ 99.99%	0.4	± 0.02	Bio-compatible



SPT Roth Ltd
 Werkstrasse 28
 CH-3250 Lyss, Switzerland
 Tel: + 41 32 387 80 80
 Fax: + 41 32 387 80 88
 E-Mail: info@sptroth.com

Small Precision Tools, Inc.
 1330 Clegg Street
 Petaluma, CA 94954, USA
 Tel: + 1 707 765 4545
 Fax: + 1 707 778 2271
 E-Mail: info@sptca.com

SPT Asia Pte Ltd
 970 Toa Payoh North, #07-25/26
 Singapore 318992
 Tel: + 65 6253 5577
 Fax: + 65 6250 2725
 E-Mail: info@sptasia.com

www.smallprecisiontools.com

