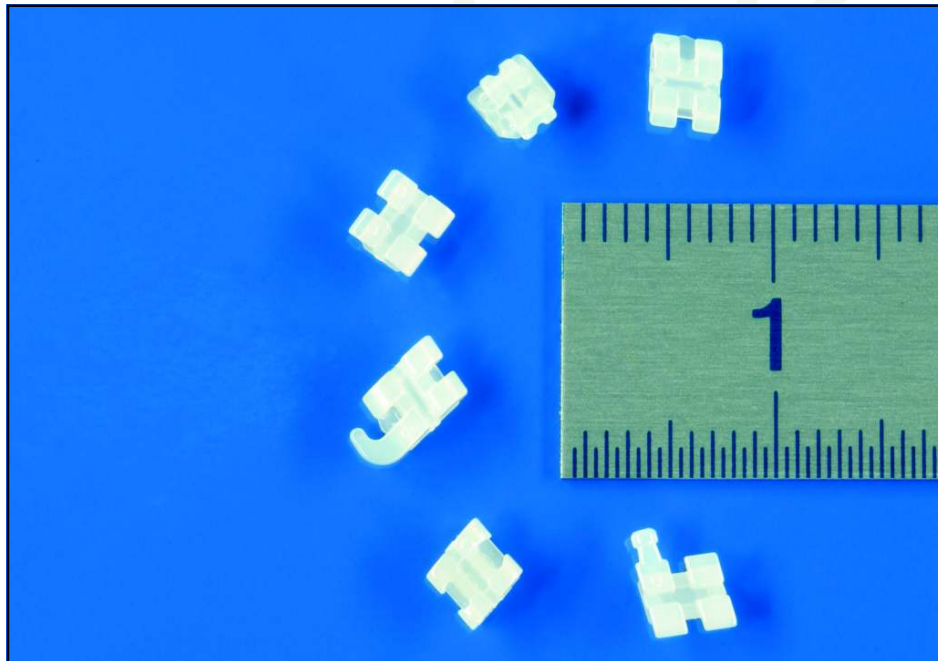


# CERAMIC AND METAL INJECTION MOLDING CASE APPLICATION



Technical Data					
Part	Application	Material	Weight [g]	Tolerance [mm]	Special Characteristic
Bracket	Orthodontic	Al <sub>2</sub> O <sub>3</sub> 99.99%	0.1	±0.01	Translucent



**SPT Roth Ltd**  
 Werkstrasse 28  
 CH-3250 Lyss, Switzerland  
 Tel: + 41 32 387 80 80  
 Fax: + 41 32 387 80 88  
 E-Mail: info@sptroth.com

**Small Precision Tools, Inc.**  
 1330 Clegg Street  
 Petaluma, CA 94954, USA  
 Tel: + 1 707 765 4545  
 Fax: + 1 707 778 2271  
 E-Mail: info@sptca.com

**SPT Asia Pte Ltd**  
 970 Toa Payoh North, #07-25/26  
 Singapore 318992  
 Tel: + 65 6253 5577  
 Fax: + 65 6250 2725  
 E-Mail: info@sptasia.com

[www.smallprecisiontools.com](http://www.smallprecisiontools.com)

